

1. Features

Product adopt the widely used 2.4GHz wireless technology with the features of low power consumption, long signal transmitting and strong anti-interference, etc. This product has auto-transmitting and auto-synchronizing function. Widely used on the controlling of hotel lighting and home lighting.



16 Millions of colors to choose



Remote control
Control distance 30m



Color temperature adjustable



Smartphone app control
(2.4GHz gateway is needed)



Dim brightness / Saturation



Support third party voice control
(2.4GHz gateway is needed)



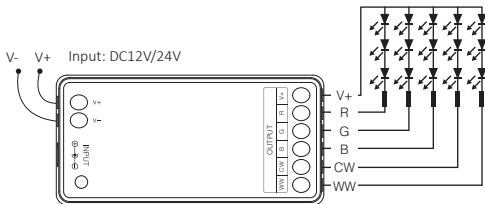
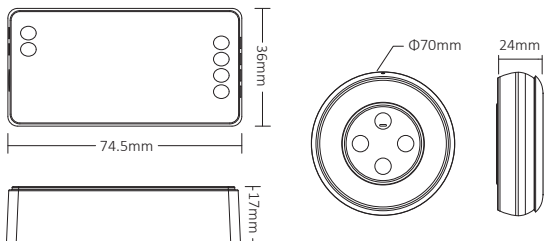
2.4G RF wireless transmission technology



Signal transmitting & Modes synchronization

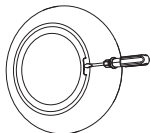


DMX512 controllable
(DMX512 LED transmitter is needed)

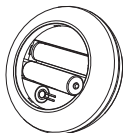


Install The Battery For Remote

Note: 2*AAA Battery need to buy seperately

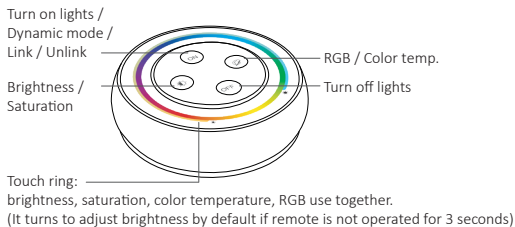


1. Open battery cover behind remote.



2. Install battery correctly and close battery cover.

2. Button Diagram



3. Remote Instruction



- **Adjust RGB**

Short press  key twice in succession, and then touch  to adjust RGB.



- **Adjust color temperature**

Short press  key once, then touch  to adjust color temp.


- **Adjust saturation**

Press  key twice in succession, and then touch  to adjust color saturation of lighting.

- **Adjust brightness**

Short press  key once, then touch  to adjust brightness.

- **Dynamic mode switching**

Long press  key until indicator light flashes twice, then

Short press  key to cycle switch.

(Note: it will exit automatically if no operation after 3 seconds)

4. Dynamic mode table


Number	Dynamic Mode	Brightness / Saturation
1	Mardi Gras	Adjustable
2	Automatic color change	
3	Sam	
4	Gemstone	
5	Twilight	
6	American	
7	Fat Tuesday	
8	Party	
9	Slow Color Splash	

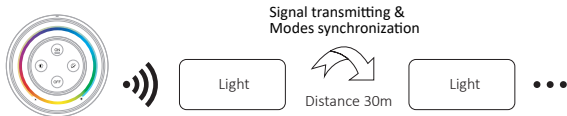
5. Signal transmitting

One light can transmit the signals from the remote control to another light within 30m, as long as there is a light within 30m, the remote control distance can be limitless.

6. Modes synchronization

Different lights can work synchronously when they are started at different times, light by the same remote, under same dynamic mode and within 30m distance.

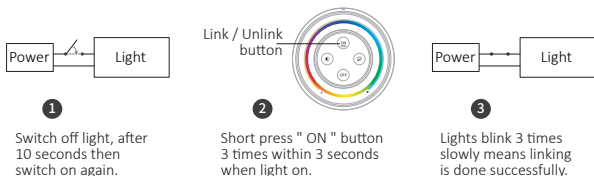
 The same dynamic mode, the same speed can be synchronized.



7. Linking Code / Unlinking Code Instructions

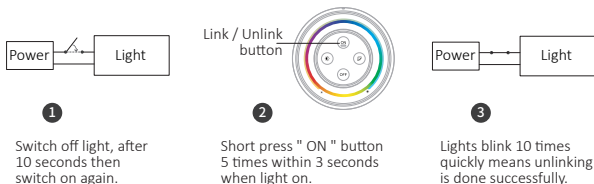
Attention: No need to match code since its already matched code in factory setting

Linking Code Instructions



Linking failed if light is not blinking slowly, Please follow above steps again.
(Note: Light that have linked can't link again)

Unlinking Code Instructions

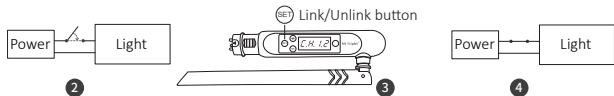


Unlinking failed if light is not blinking quickly, Please follow above steps again.
(Note: Light haven't linked that don't need to unlink)

8. DMX512 LED Transmitter Link /Unlink

Compatible with DMX512 LED Transmitter (Purchase separately)

- 1 Choose the zone for the light by pressing “+” or “-” (e.g. “CH12” means zone 12)



Link

Switch off the light,
after 10 seconds
switch on again

When the light is on, short
press "SET" 3 times within 3
seconds

The light blink slowly 3 times,
means the linking is done
successfully

Unlink

Switch off the light,
after 10 seconds
switch on again

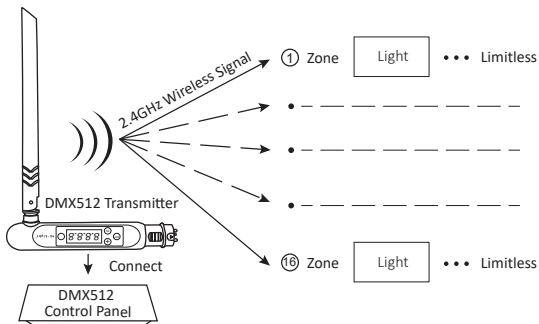
When the light is on, short
press "SET" 5 times within 3
seconds

The light blink quickly 10 times,
means the unlinking is done
successfully



If the link or unlink failed, please follow the above steps again.

9. DMX512 LED Transmitter Connection Diagram



10. Scan QR code to watch video instruction



Smartphone app control
(WL-Box1 video)



Third party voice control

11. The mode of “Do Not Disturb”

It can be activated or turned off via remote control

Turn on “Do not disturb” (wide using in the area which have power failure frequently to save energy)

Press “OFF” button three times within three seconds and press “ON” button three times, Activated successfully once led light flashes four times quickly.

Attention: Do not disturb mode is activated

1. When the light is OFF status (For example: Use app or remote to turn off light)
The light is OFF status once you turn off power and turn on again. **(User must turn off and turn on power twice times to activate light or use APP / remote to activate light)**
2. When the light is ON status
The light is ON status once you turn off and turn on power one time.

Turn off “Do not disturb”

Press “ON” button three times within three seconds and press “OFF” button three times, closed successfully once led light flashes four times slowly.

Attention: The light will be always “ON” status if you turn on and turn off power once user closed “Do not Disturb” mode.

12. PWM high frequency / low frequency switching

Switch to high frequency (8KHz): on the condition of turning on the light

1. Short press the “OFF” button of the remote control once;
2. Short press the “ON” button 5 times within 3 seconds, the white light blink 2 times quickly, indicating successfully.

Switch to low frequency (500Hz): on the condition of turning off the light

1. Short press the “ON” button of the remote control once;
2. Short press the “OFF” button 5 times within 3 seconds, the white light blink 2 times slowly, indicating successfully.

13. Attention

1. Please check whether the voltage of the power supply is in accordance with the light, and please check the connection of both the cathode and anode, otherwise the light will be broken.
2. Please don't connect wires with power on. Please turn on again only when it is in right connection and no short circuit.
3. Non-professional user cannot dismantle the lighting fixtures directly.
4. Please do not use the light in the place with widely range metal area or strong electromagnetic wave nearby, otherwise, the remote distance will be seriously affected.

Made in China

