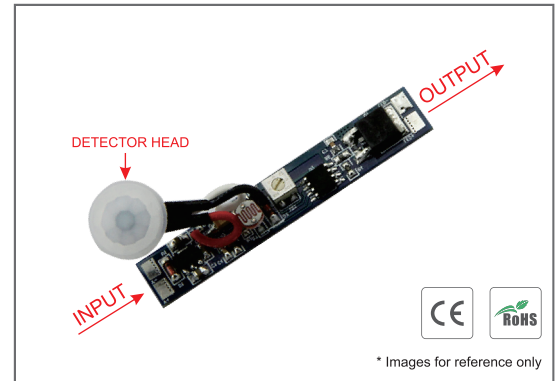


# PIR Motion Sensor With Light Sensor Switch LSS002

## Functions:

- Automatically ON/OFF.
- Input Voltage: 12V-24V DC.
- Loading Power: 8A Max .
- Lux Range: 2~60 lux.
- Delay Time: About 40 seconds.
- Detection Range:  $\leq 2$  meters.
- Dimension: 57\*10mm.

V+	-- DC input positive
V-	-- DC input negative
LED+	-- Output to LED Strip positive
LED-	-- Output to LED Strip negative

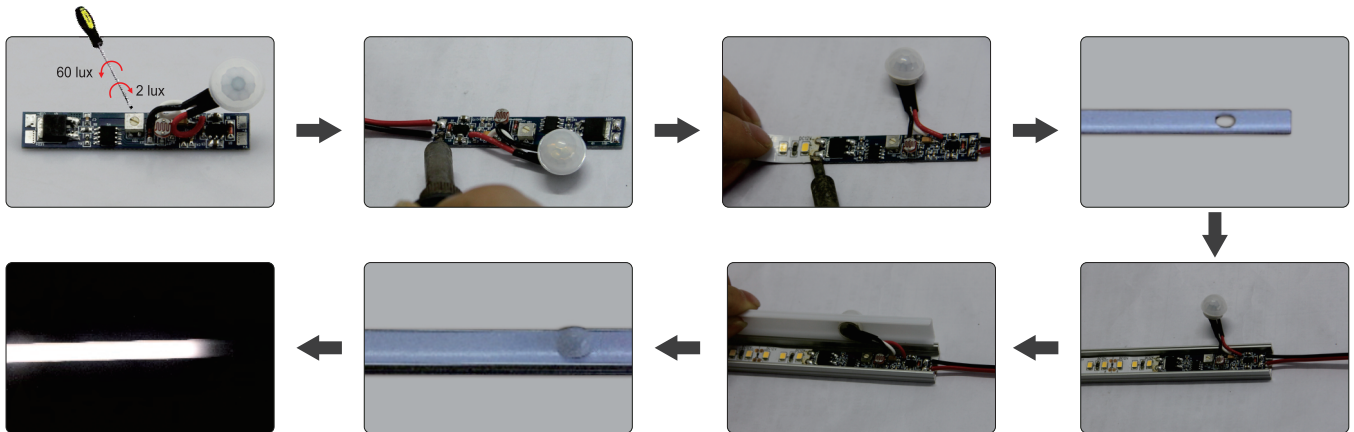


## Operations:

- Motion sensor with light Sensor Switch LSS002 is to be assembled into lighting fixtures.
- It will turn off the LED light at day time and turn on the LED light automatically when human moves within 2 meters at night.
- The lighting fixture equipped with LSS002 will stay on if the human body stays within detection range (2 meters) from the sensor at night and will turn off in 40 seconds after human body moves away more than 2 meters at night .
- Light sensor switch adjustable range: 2-60 lux

## Installation Steps:

- Step 1: Cut a 10.5mm hole at the fixture.
- Step 2: Put the detector head into the 10.5mm hole.
- Step 3: Connect wires to the input end and output end of the control PCB.



**Note:** The function/program can be customized, made upon different needs, such as longer time for stay on, etc.

## Notices:

1. Avoid being exposed to sunlight, auto bulb and incandescent lamp, neither to heat source (such as radiator and heater), or air conditioner, in case of faulty detection caused by ambient temperature change.
2. Sensor switches must be firmly installed, in case of faulty detection from wind shaking.
3. Don't touch the surface of detector.
4. Regularly clean the optical lens surface with wet soft cloth or cotton, in case of dust influence the sensitivity.